



What's new

What's new

# WiselImage

for Windows & AutoCAD

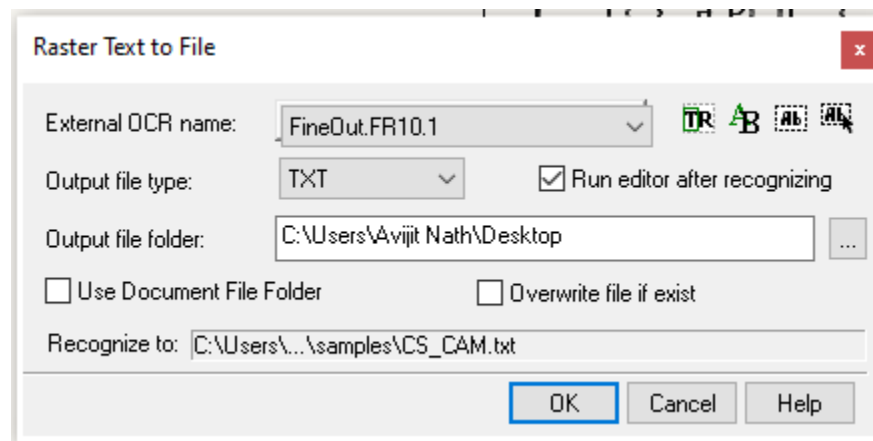
Version 22.0

**CS**oft

## Raster2File

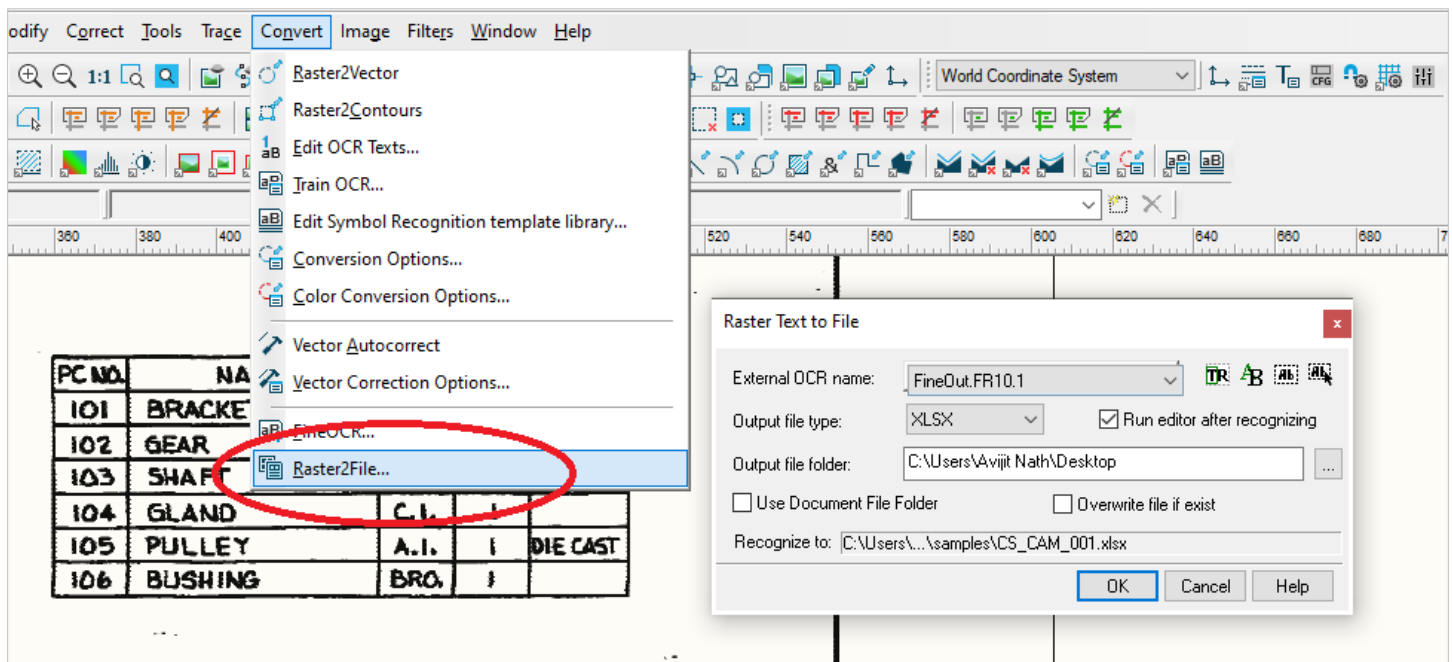
Perform vectorization of text from raster file using the Abby FineReader OCR. The text file can be stored in different formats like RTF, HTML, XLS, PDF, TXT, XMLA, PDFa, DOCX, XLSX, PPTX, ALTO, EPUB and FB2.

Setting up the **Raster2File** can be performed in the **Conversion Options**



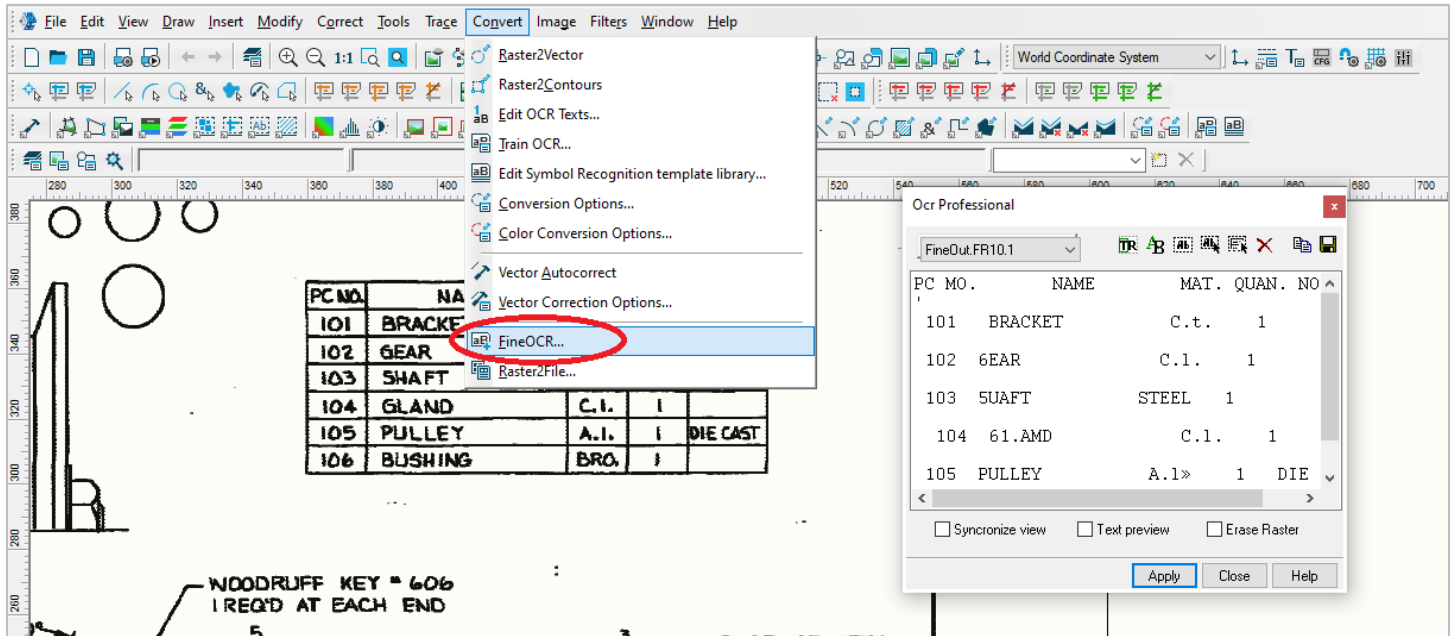
## To start the command

From **Convert** menu choose **Raster2File**



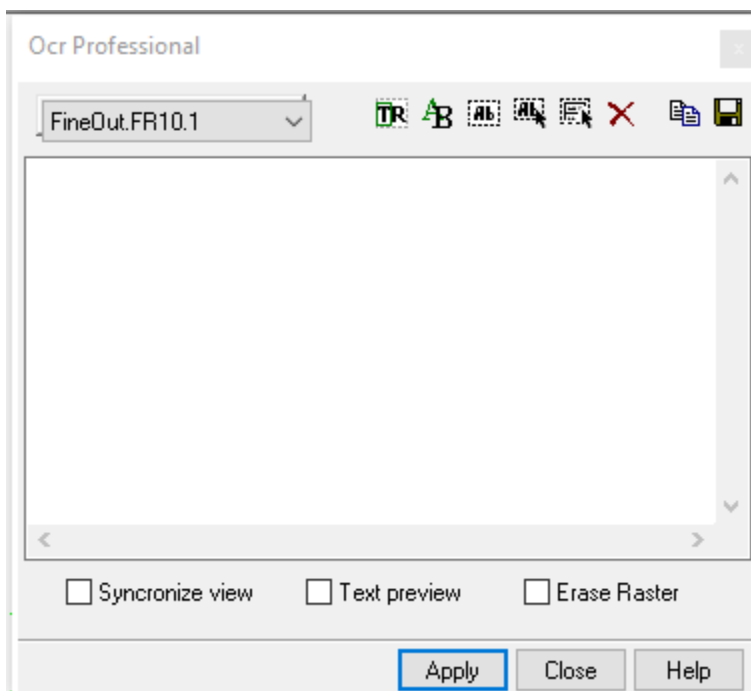
## Fine OCR/OCR Professional

Besides native text recognition engine, WiselImage allows you to use additional OCR modules from third-party firms (OCR modules are intended to recognize texts on raster images). By default, WiselImage includes FineReader**OCR engine** by ABBYY Company.



## ABBYY Fine OCR on Windows x64 platform

Now ABBYY Fine OCR is available in WiselImage Pro 22.0 on Windows x64 platform.



### .dwg file support

WiselImage 22 for windows supports the latest version of .dwg file.

### AutoCAD Support

WiselImage 22 for AutoCAD supports the latest version of AutoCAD 2020, 2021 and 2022.

### Search and Replace part string from Multiline Text / Normal Text in WiselImage 22.0 Pro

To search a part (string) of any text (Multiline Text or Normal Text) from a vector drawing file and replace it with another string in WiselImage 22.0 Pro.

For example, we want to search and select all the text containing "9-30654" from the multiline text string of

9-30654-2

9-30654-3

9-30654-4

9-30654-5

9-30654-6

9-30654-7

9-30654-8

By entering search criteria like "9-30654\*"

Now we will replace it with "9-30754-\*", the rest of the string part should remain unchanged. The output will be

9-30754-2

9-30754-3

9-30754-4

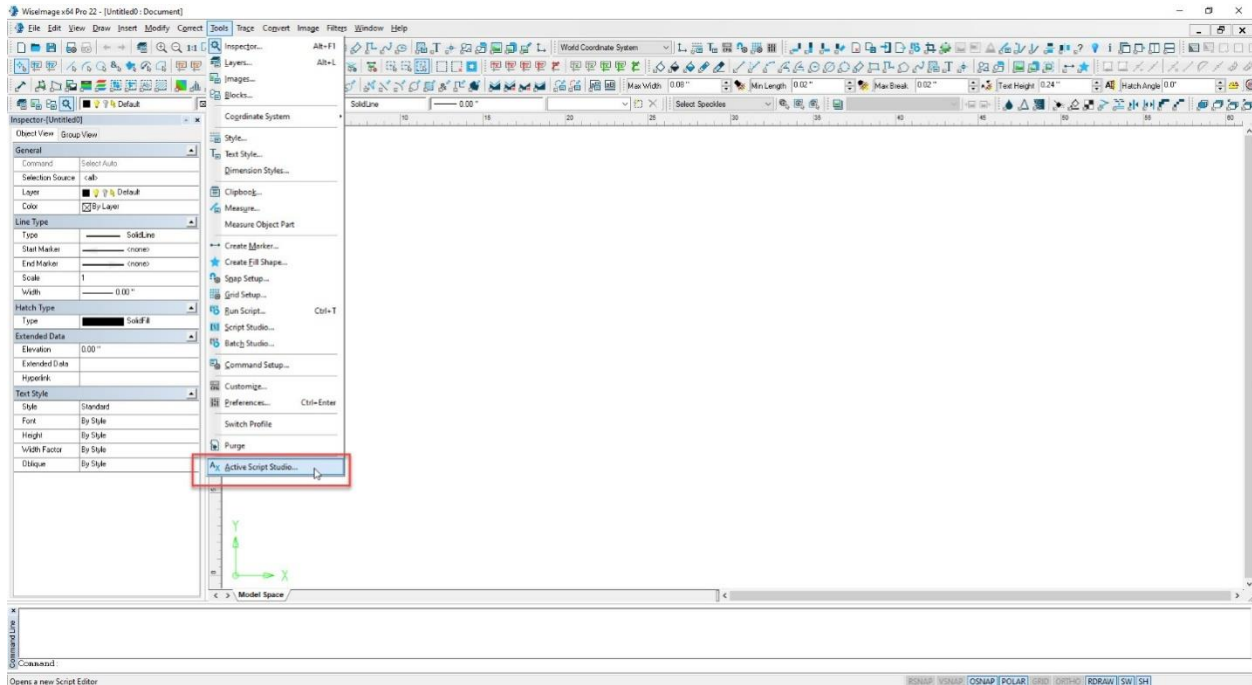
9-30754-5

9-30754-6

9-30754-7

9-30754-8

The script will run from the **Active Script Studio** window. **Active Script Studio** is available from **Tool > Active Script Studio** as shown below:



After running the script the Text **Find & Replace** window will appear, enter the string to search in the upper text box and enter the string to replace in the lower text box then click on **Replace/ ReplaceAll** button to replace the searched text.

