

WiseBook

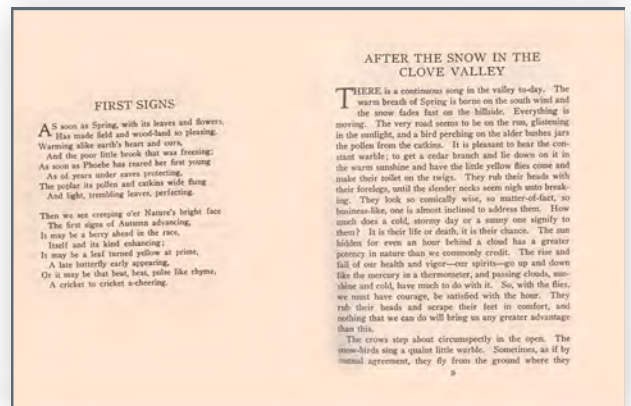
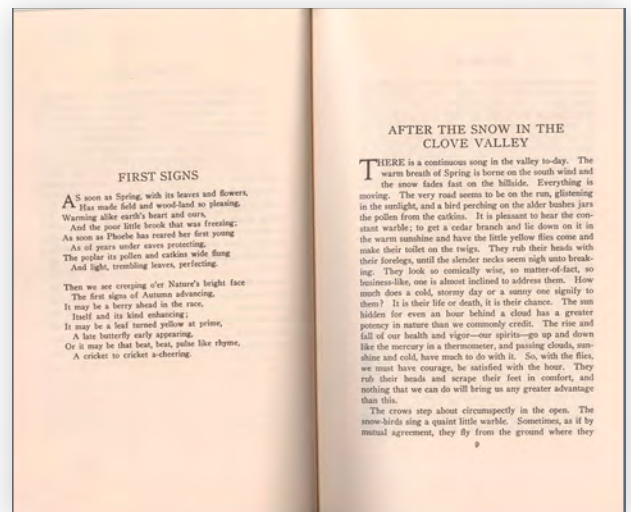
Scanned Book



WiseBook



My Book



CSoft introduces the book scanning solution that simplifies existing processes and produces perfect printer ready images and multipage files.

- Books become digital in one single run
- Suitable for all scanner types
- Improved turnaround time with automatic batch processing
- Unique page cutting tools
- Accurate automatic book-fold flattening
- Special scanning tools for single page documents
- OCR-connection option

Book scanning

Basically, there are two devices with which to scan a book:

1. a conventional flatbed scanner
2. a planetary camera scanner

Cost-wise there is no contest: a conventional flatbed scanner is much cheaper. However, flatbed scanners have some severe limitations:

- To get a decent image, you have to place your book face down on the glass, then pick it up, turn the page, and place the book down again;
- Despite pressing down, the page still "curves" at the centre of the binding, distorting the words near the bound edge.
- Even then, there are dark shadows down the centre of the book where the light travels further and focus is offset.

So, the perfect software to scan a book on a flatbed scanner has to be equipped with special tools to compensate distortions of the curved book-fold. And WiseBook is the software of choice.

WiseBook is your choice

WiseBook adapts the existing commercial document capture technologies to the special and uncompromising needs of preservationists. The result is a high performance digitizing solution that can work 'out-of-the-box' or become a part of large and complex digitization projects. In either case, WiseBook can be configured to produce output at virtually any quality level while offering the highest throughput possible today. CSoft image processing tools possess equally high productivity for various kinds of source documents: books, drawings, photos, maps, etc.

WiseBook at a glance

Powerful WiseBook image-treatment capabilities automatically eliminate unwanted skew effects and clean up an image. WiseBook is compatible with most large and small format scanners. With wide-format flatbed or planetary scanners WiseBook scans two pages at once, automatically splits pages, and there is even a mode for automatic "straightening" of the curved part of the page where it dips into the centre binding. The same applies to already scanned images.

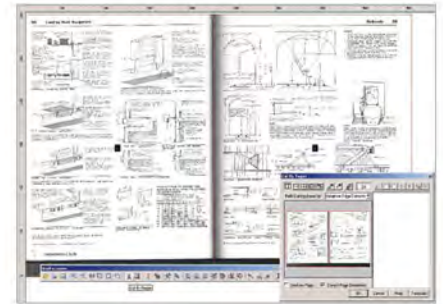
Each double page takes only seconds to scan, process and save. Then you turn the page and click the 'Scan' button again for the next pair of pages.

Cutting a double page scan

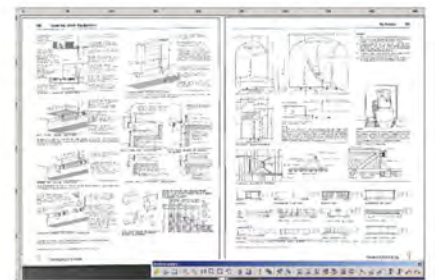
WiseBook automatically cuts the two-folds of the scanned book into pages by means of a special tool 'Cut By Pages', with the possibility to use different orientation of the book-fold which can be either vertical or horizontal. Also there is an option for trimming the book-fold area of the image of a single scanned page.

For those purposes, several cutting methods are used. The most common of them uses background colour of the page to identify the page area. A book-fold area is normally darker as the gradient inclines. WiseBook automatically corrects brightness of the book-fold by compensating the gradient. It is done in the post-processing of the image after separating the pages.

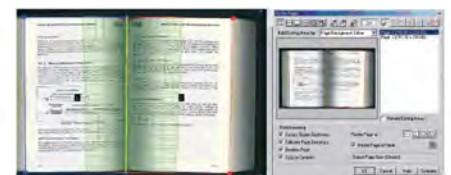
The user can control the cutting by checking how WiseBook defines the area to be cut. For each page of the book the cutting tool shows the calculated page borders, the book-fold position and brightness distortion areas overlaid on the image of the book. If the result is not adequate the operator can correct them manually.



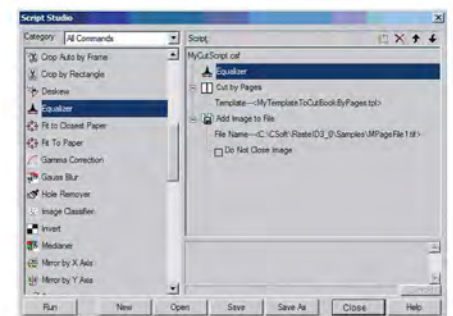
Monochrome double-page scan split preview



Double pages splitted and corrected



Estimation grid of bookfold calibration for doublepage scan



Double pages splitted and corrected

Cleaning to perfection

A brightness grid is used to approximate the brightness gradient of the book-fold. Using this grid WiseBook automatically corrects geometrical distortions on the page and estimates the shadow curves at the book-fold.

The page image can be automatically deskewed. WiseBook estimates a skew angle for each page and rotates the cropped page at the required angle.

Sometimes it is necessary to crop the scanned page image up to the actual page contents by cutting out the page margin, and WiseBook offers you such an option. Other options include the forced page rotation, the tool that fits page contents to the closest standard page format, etc.

All parameters of the settings mentioned above can be saved in as template file for further use during a batch scanning process.

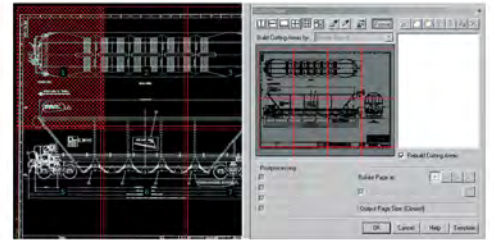
WiseBook - not only for books

Single page scan

WiseBook helps you to increase productivity of scanning single-page documents. Its intellectual capability frees you from routine tasks. If you place a single page on a flatbed scanner, you don't need to worry about alignment. WiseBook automatically finds the page, crops the image and deskews it. Optionally WiseBook can resize your image to the preselected or the closest standard page size.

Multipage output

If you need to print a large drawing on a small printer, you need mosaic the original image with slightly overlapped slices according to the output paper size. The same is necessary, when you need to create a small-sized book of maps from the large source map. As you already guessed, WiseBook is perfectly capable to help you out with this.



Preparing for multipage output



Optional OCR converts scanned page to RTF